



## Have you ever wanted to be a Nosy Neighbor?

flexmls® Web has a feature where you can click on any parcel on the map and bring up the parcel dimensions and any listing history that is available on that property.

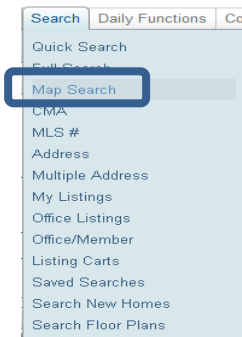


Fig. 1

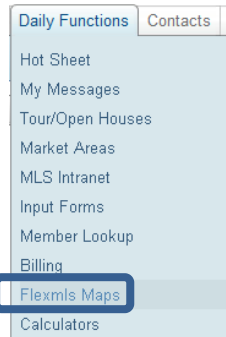


Fig. 2

1. Go to the Search tab within flexmls (Fig.1)
2. Or, click on Daily Functions and flexmls Maps (Fig. 2)

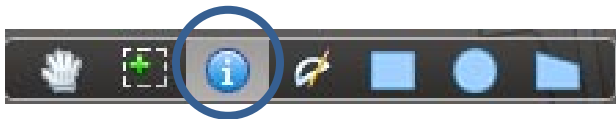


Fig. 3

3. Select the Nosy Neighbor Tool from your tray (Fig.3)

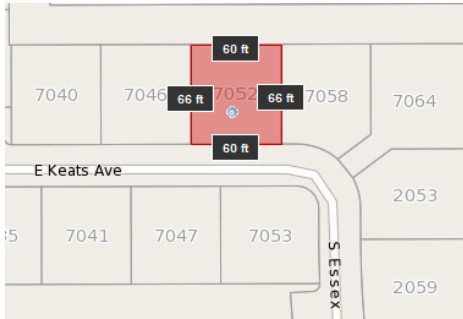


Fig. 4

4. Click on any parcel on the map (Fig.4)
5. Dimensions of that parcel will appear (Fig.4)

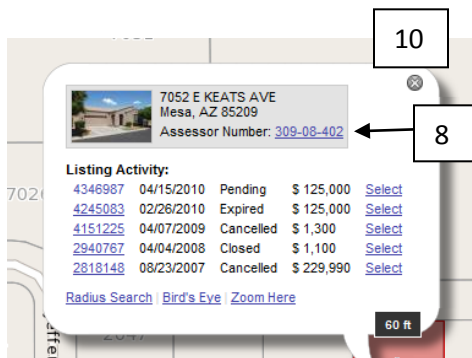


Fig. 5

6. A bubble will appear with all the listing activity for that property. (Fig. 5)
7. To view details on any of the listings, simply click on the MLS number to view its listing report in a separate window.
8. Click on the Assessor Number to view additional information on selected parcel.
9. Click Radius Search, Bird's Eye or Zoom Here to perform these functions.
10. To close the bubble, click the X in the upper right corner of the bubble.