



Saving Time with *My Map Overlays*

This feature allows you to create, save and reuse custom shapes drawn on a map overlay.



1. Go to *Preferences*
2. Click on *My Map Overlays*

My Map Overlays

Welcome to the Map Overlays editor

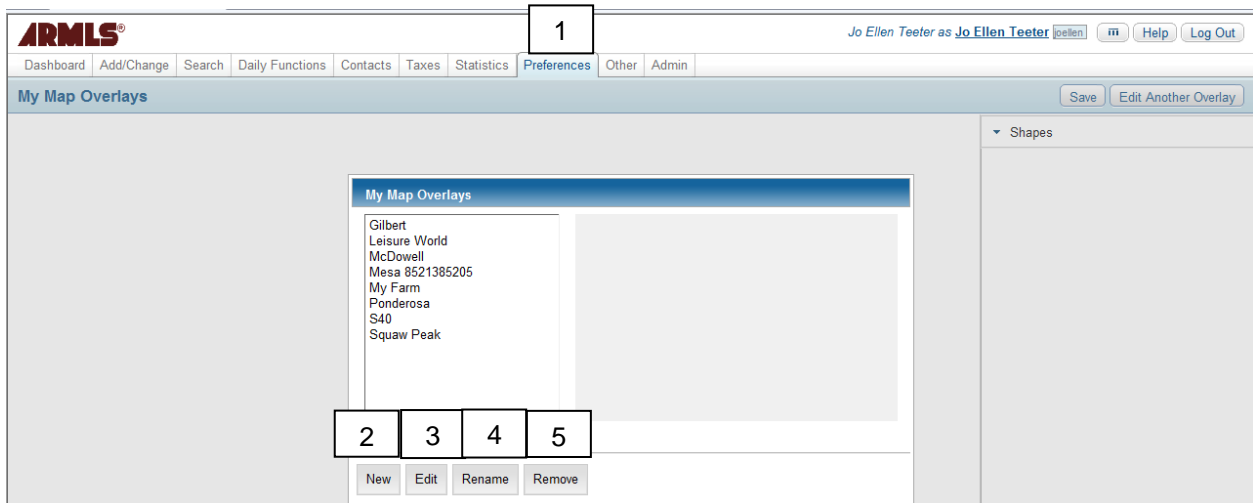
From the Map Overlay editor, you can create your own custom map overlays for use on your maps, within your searches, within statistical reports and everywhere else Location Searching is available. You can even include these inside your portals and your IDX websites.

Once you've drawn some polygons, you can click on them to edit their attributes. You can give them names and pick colors for them. Also, you'll be able to edit your shapes after you've drawn them in order to get everything exactly like you want. Once you have your masterpiece completed, make sure to save and you're ready to use your new shapes in searches, reports, the dashboard, etc.

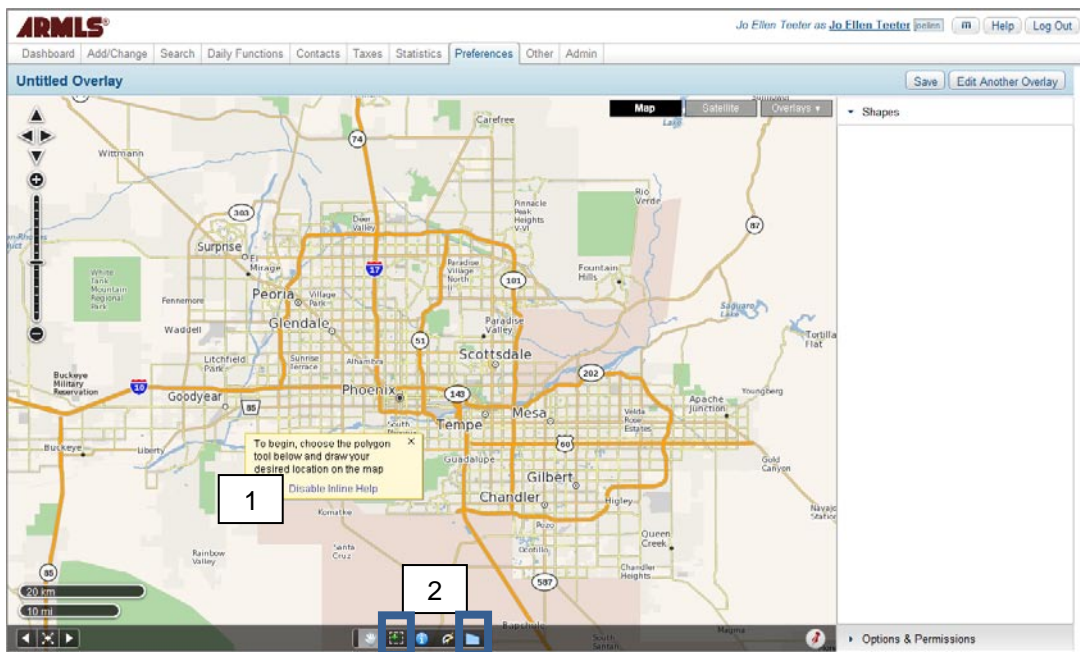
To begin, simply click the Let's Begin button below. We'll start you with an empty map of your area. From there, just start drawing the shapes you'd like in your map overlay and give them the proper labels.

[Let's Begin](#)

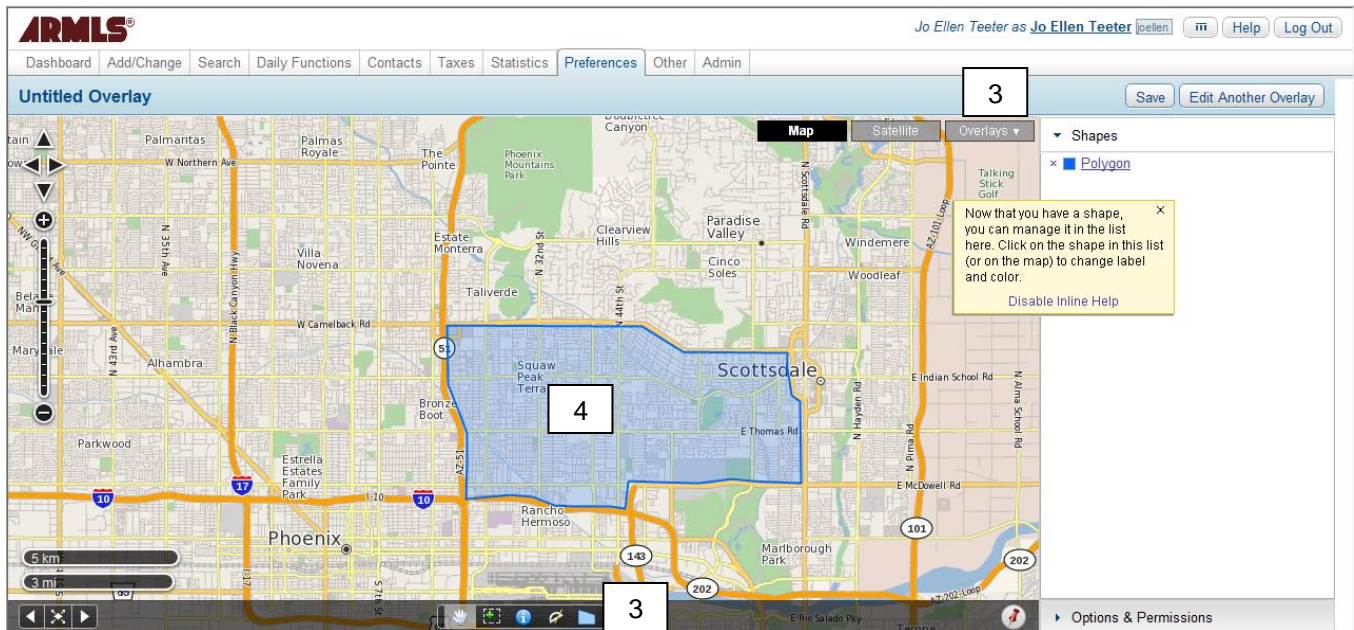
The above *Welcome to the Map Overlays editor* screen only shows up the first time you visit this area. Otherwise, you will see the screen shot below.



1. Click *Preferences* then click *My Map Overlays* to see all of your overlays.
2. Click *New* to create a new overlay.
3. Click *Edit* to change any of your saved overlays.
4. Click *Rename* to change the name of the selected overlay.
5. Click *Remove* to delete any of your overlays.

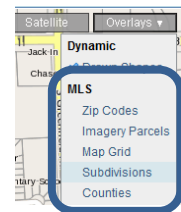


1. To disable this feature, click the *Disable Inline Help* link in this box.
2. To get started, zoom in to the area you would like to draw a shape on and select the polygon tool

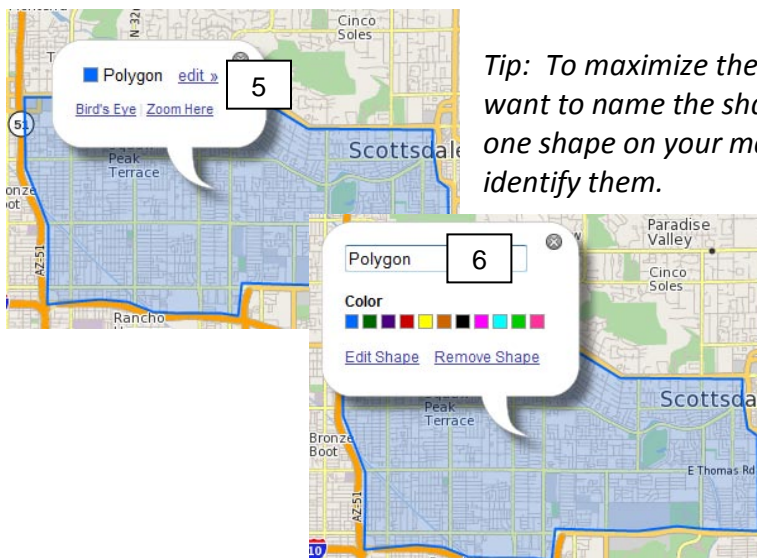


3. Draw your shape using the polygon tool. You can draw as many shapes as you wish on one overlay.

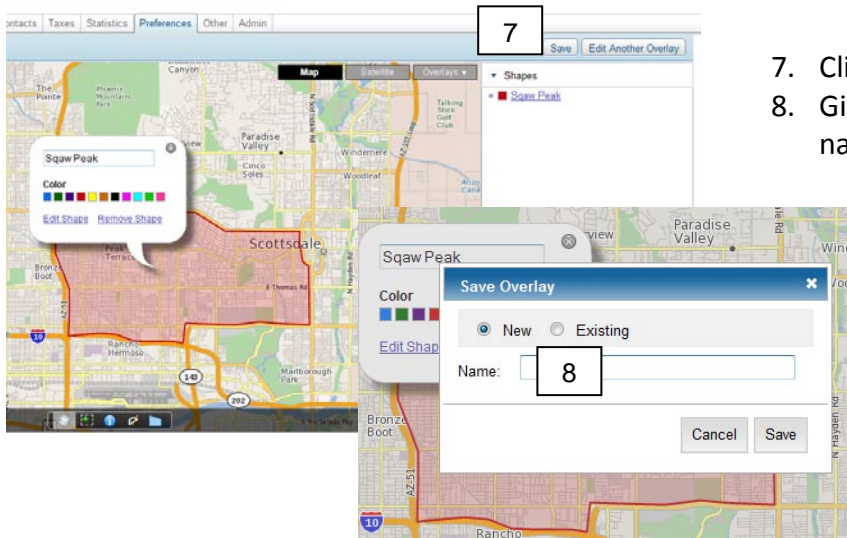
TIP: You can use Subdivisions, Counties, Map Grid or Zip Codes Overlays to help in drawing your shape.



4. To edit shape, a single-click on the shape will launch an edit bubble where you can name it, color it, or change its size.
5. Click *edit*.
6. Give the polygon a name and color.



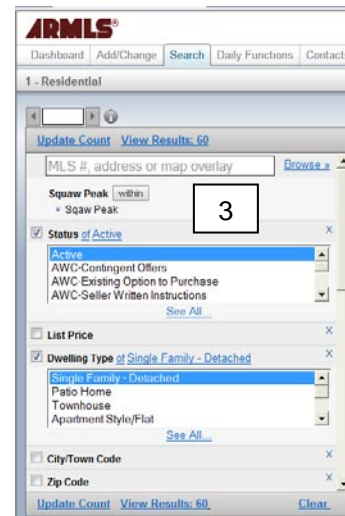
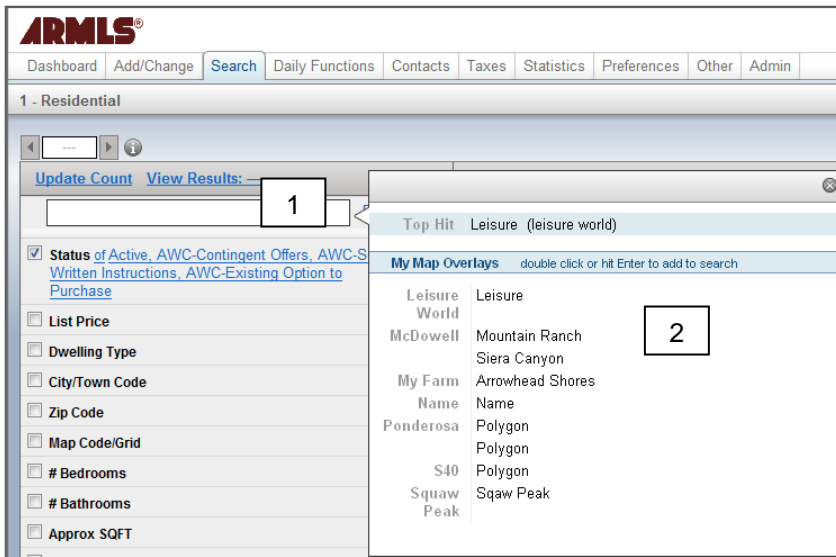
Tip: To maximize the benefits of this new feature, you will want to name the shapes you draw. If you have more than one shape on your map add a color to each shape to help identify them.



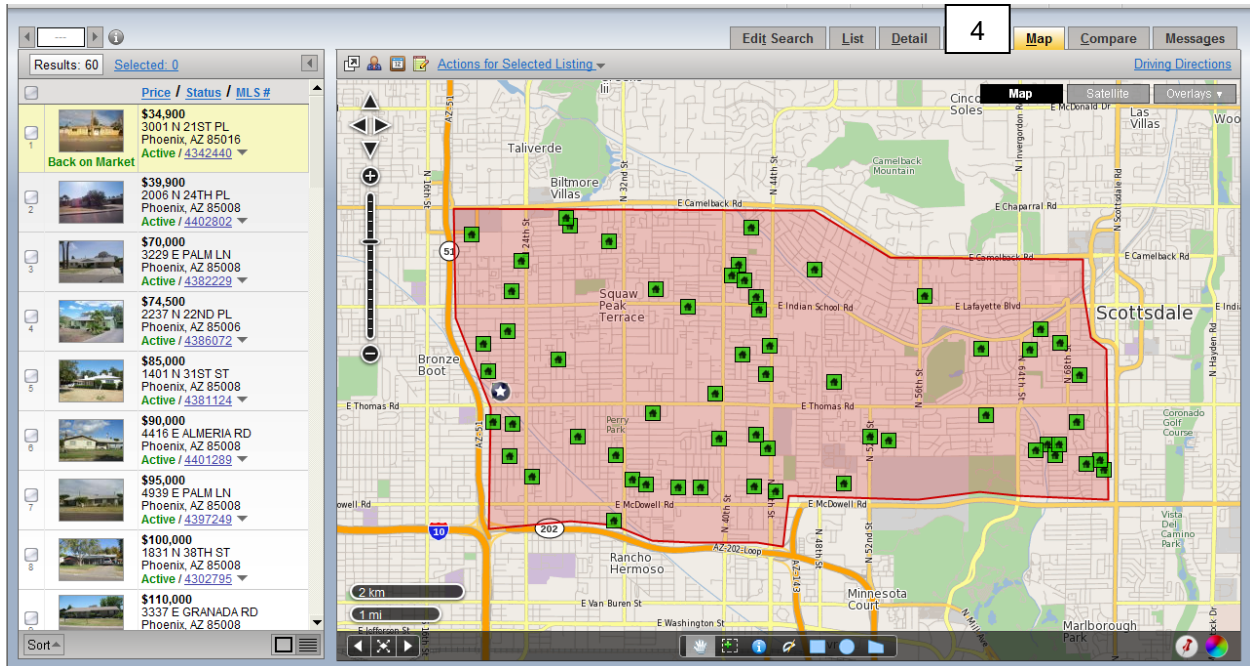
7. Click *Save*
8. Give your new overlay an overall name.

Tip: If you only have one shape, you can give it the same name. If you have multiple named shapes, give your Overlay a name to cover all your shapes, i.e. County Islands or Subdivision etc.

To use your overlay



1. From a Quick Search, place your cursor in this box and the list of all your *My Map Overlays* that you have created will pop up.
2. Double-click on the shape you wish to use for your search criteria.
3. Complete the rest of your criteria.



4. Click on the *Map* tab to view your search results with the shape you selected.